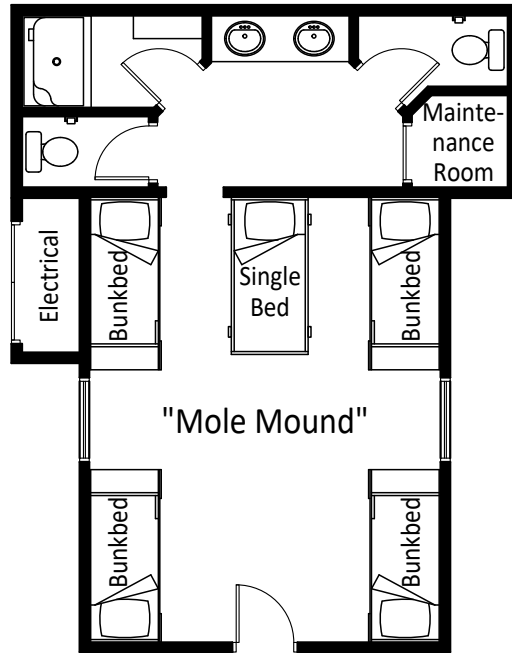
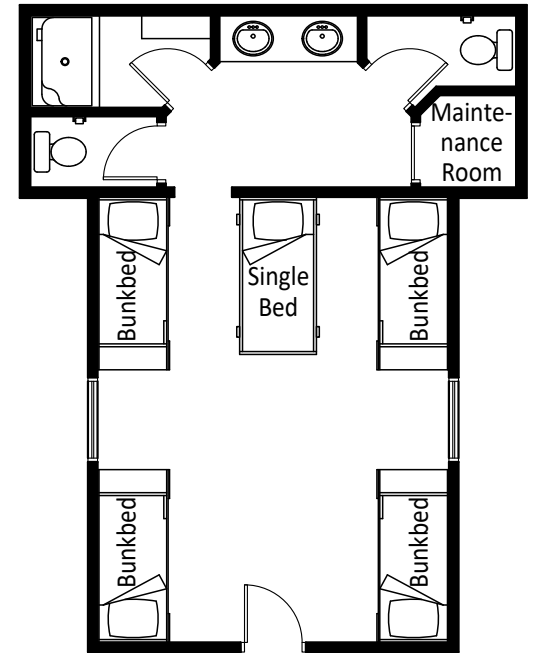


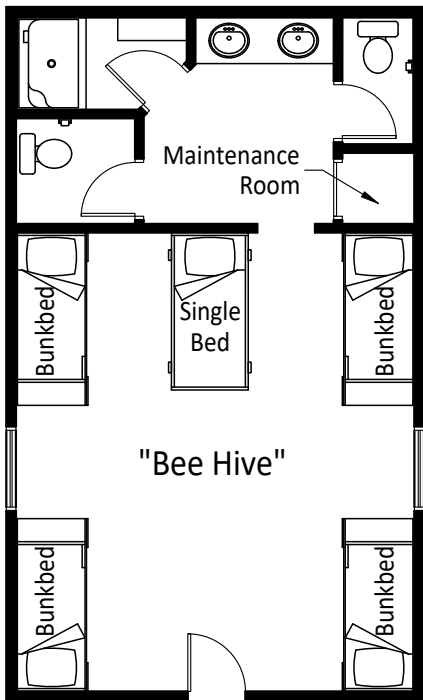
"Fox Hole"



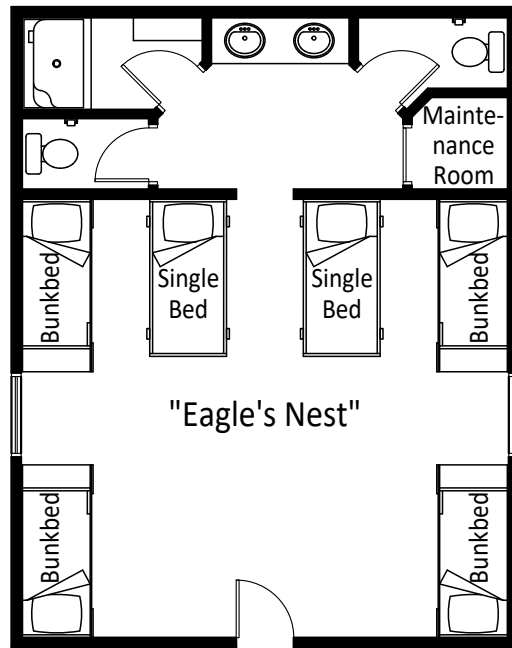
"Mole Mound"



"Coyote's Crag," "Bat Cave," "Bear Pad,"
"Beaver Lodge," and "Deer Glen"



"Bee Hive"



"Eagle's Nest"

Each cabin has a sleeping capacity of 9 people, except for "Eagle's Nest," which has a sleeping capacity of 10 people.

Timberline Ranch "Poolside Cabins" Floor Plans

Draw Date: Sept., 2018

Scale: 1:100

Filename: floorplan_poolsidecabins.pdf