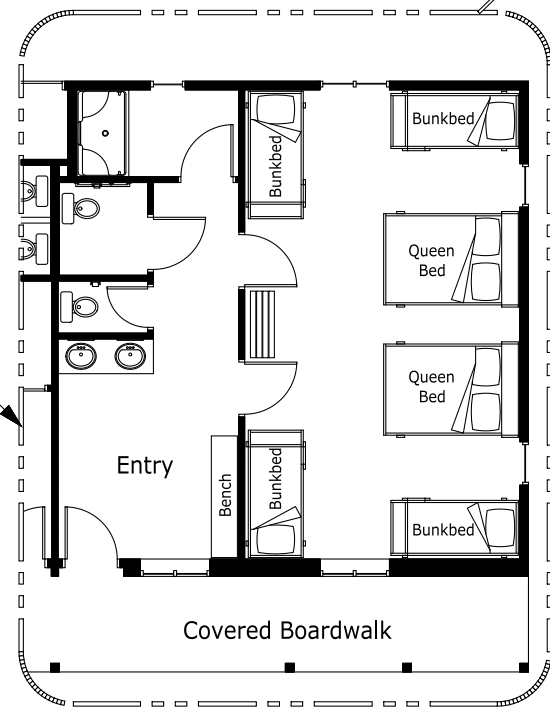


Each unit has a sleeping capacity of 10 people (or up to 12 with two people per queen bed).

Enlarged view of the HANDICAPPED ACCESSIBLE unit

Enlarged view of one of the five STANDARD UNITS



To cabins and pool →

# Timberline Ranch Western Town - Floor Plan

Drawn: August, 2011  
 Filename: western\_town.pdf